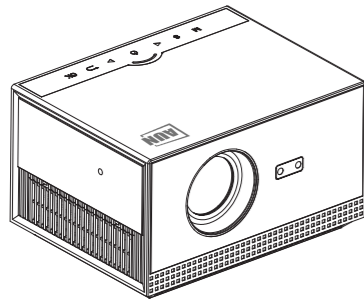


PORTABLE PROJECTOR
USER'S GUIDE



AUN A003 Pro



Before using the projector, please read this user manual carefully and keep it for future use.

CAUTIONS

1. Be sure to use the standard power adapter of the device, as improper use of the power supply can cause serious damage to the device.
2. If you do not use the device for a long time, please ensure that the power is turned off.
3. Please avoid entering or blocking the fan outlet to avoid affecting the fan operation.
4. Please do not power off directly or shut down the device while it is in working condition.
5. When connecting external devices with high power consumption, please confirm whether the power consumption can be supported.
6. Do not attempt to repair this product yourself. If the product or its power supply experiences any malfunction or damage, Stop using immediately and contact the distributor for support.
7. This sign warns the user that there is voltage inside the unit that has not been insulated, which may cause surface magnetic fields and cause electric shock. Therefore, it is very dangerous to come into contact with the internal components of the unit.

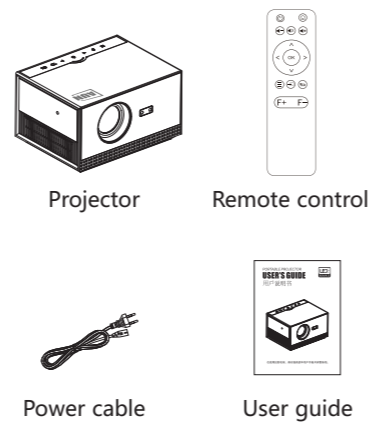
WARNING ⚠

To prevent fire or electric shock, do not expose this unit to rain or moisture.

.01.

COMPONENTS

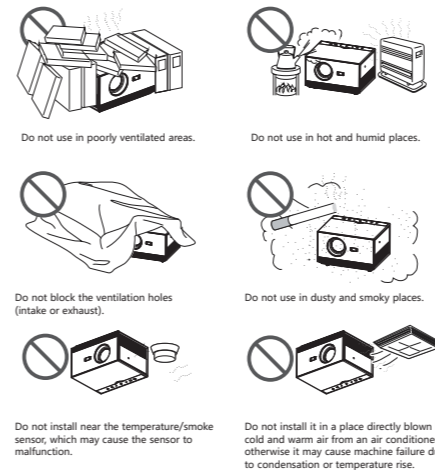
Please check whether the contents of the package are complete. If there are anything missing, please contact the distributor to reissue.



.02.

ATTENTION

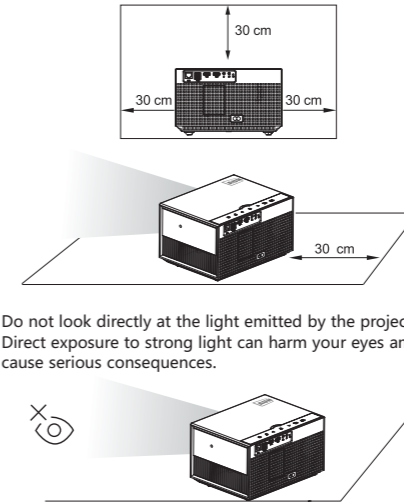
The following safety instructions ensure that this function maintains a long service life and prevents fire or electric shock.



.03.

CAUTIONS

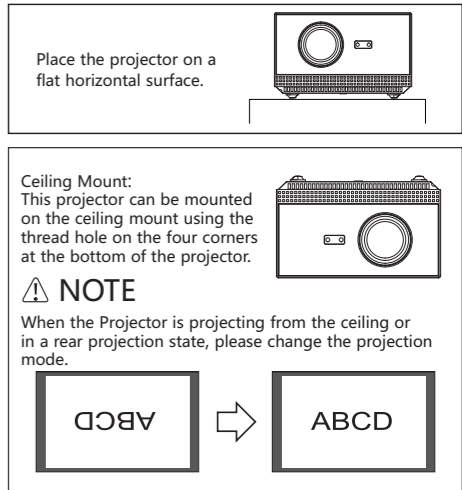
To maintain the performance and reliability of the projector, please leave at least 30 centimeters of space between the projector and surrounding objects.



.04.

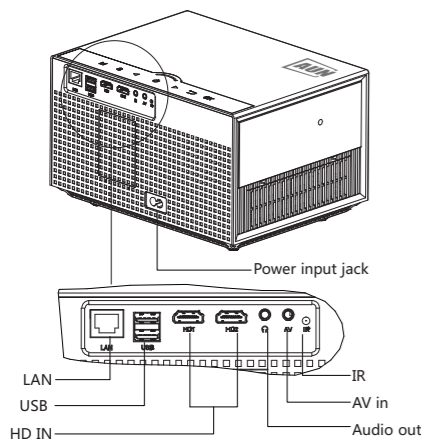
INSTALLATION

In order to achieve a better viewing experience, we recommend that you choose the following installation method.



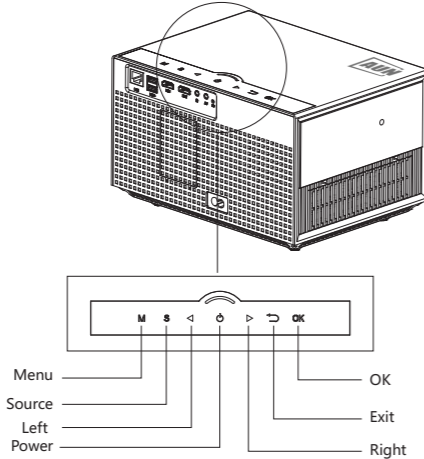
.05.

OVERVIEW



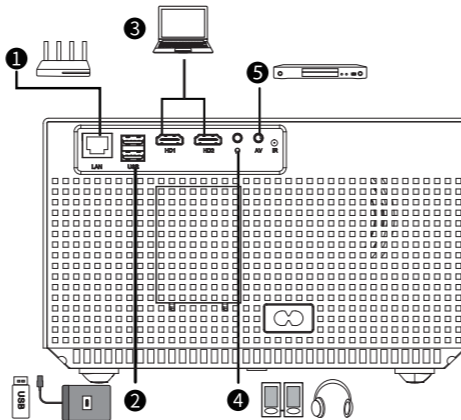
.06.

OVERVIEW



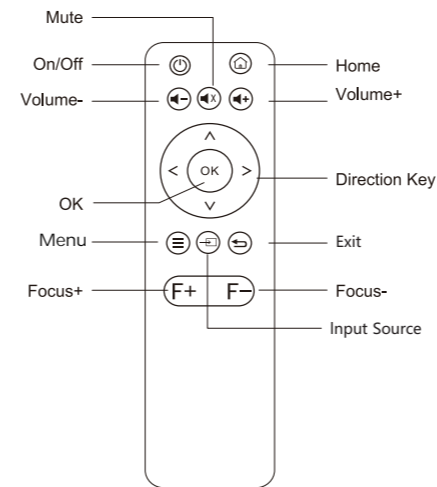
.07.

DEVICES



.08.

REMOTE CONTROL



.09.

Projection Size & Distance

Screen size indication (inches)

Screen size (inch)	Screen size W x H (M)	Projection distance (M)
43inch	0.96 × 0.53 M	1.38M
56inch	1.25 × 0.70 M	1.77M
66inch	1.48 × 0.83 M	2.08M
86inch	1.90 × 1.04 M	2.67M
96inch	2.15 × 1.17 M	2.97M
116inch	2.60 × 1.40 M	3.53M

Unit: M

Design tolerance error +/- 8%. This table takes the front end and center of the lens as measurement points, and assumes that the projector is placed horizontally (with the front and rear adjusters fully withdrawn).

.10.